

Romance - Je t'aime un peu - beaucoup - passionnément - par Mantade -

The first system of the handwritten musical score consists of three staves. The top staff is a treble clef with a key signature of one sharp (F#) and a 3/4 time signature. The middle staff is a treble clef with a key signature of one sharp (F#) and a 3/4 time signature, containing the melody. The bottom staff is a bass clef with a key signature of one sharp (F#) and a 3/4 time signature, containing a bass line. The melody begins with a half note G4, followed by quarter notes A4, B4, and C5. The dynamic marking 'mezzo f.' is written below the middle staff. The system concludes with a double bar line.

The second system of the handwritten musical score consists of three staves. The top staff is a treble clef with a key signature of one sharp (F#) and a 3/4 time signature, containing the melody. The middle staff is a treble clef with a key signature of one sharp (F#) and a 3/4 time signature, containing the melody. The bottom staff is a bass clef with a key signature of one sharp (F#) and a 3/4 time signature, containing a bass line. The melody begins with a half note G4, followed by quarter notes A4, B4, and C5. The dynamic marking 'mezzo f.' is written below the middle staff. The system concludes with a double bar line.

De cet-te blan-che mar-que-ri-te di-sait un

pour Lise à Bastien Veux-tu connaître le mé-ri-te à cha-que feuille é-cou-te

The first system of the handwritten musical score consists of three staves. The top staff is the vocal line, written in a cursive hand with lyrics underneath. The lyrics are: "pour Lise à Bastien Veux-tu connaître le mé-ri-te à cha-que feuille é-cou-te". The middle and bottom staves are for piano accompaniment, showing chords and melodic lines. The music is written in a single system with four measures.

bien à cha-que feuille é-coute bien Je t'aime un peu dit la pre-miè-re la fleur le

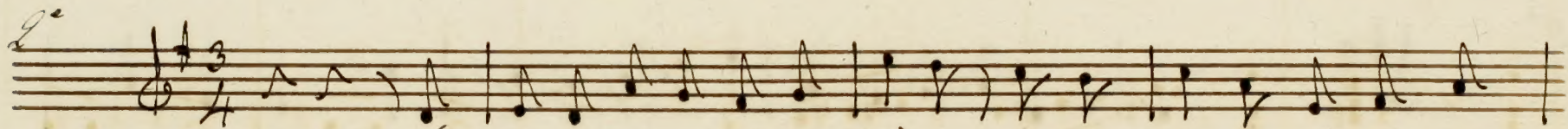
The second system of the handwritten musical score also consists of three staves. The top staff is the vocal line with lyrics: "bien à cha-que feuille é-coute bien Je t'aime un peu dit la pre-miè-re la fleur le". The middle and bottom staves are for piano accompaniment. The music continues from the first system and is written in a single system with four measures.

dit c'est tout de bon la fleur le dit c'est tout de bon et Lise a tors e'tait sin-ci-re la mar-gue-

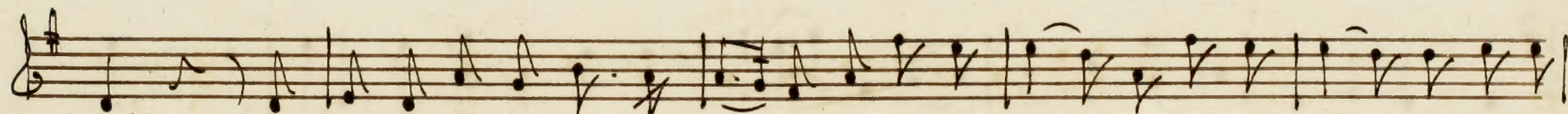
The first system of the handwritten musical score consists of three staves. The top staff is the vocal line, written in a cursive hand with various note values and rests. The two lower staves are for piano accompaniment, with the left hand on the bottom staff and the right hand on the middle staff. The music is written in a single system with vertical bar lines separating the measures.

rite a-vait rai-son' et Lise a-lors e'tait sin-ci-re la mar-gue-ri-te avait rai-son.

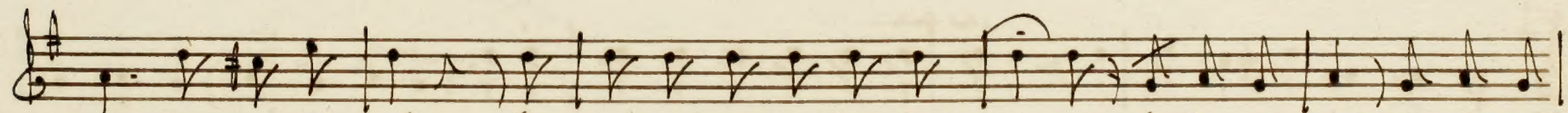
The second system of the handwritten musical score also consists of three staves. The top staff is the vocal line, continuing the melody from the first system. The two lower staves are for piano accompaniment. The system concludes with a double bar line and a repeat sign (two dots) at the end of the vocal line.



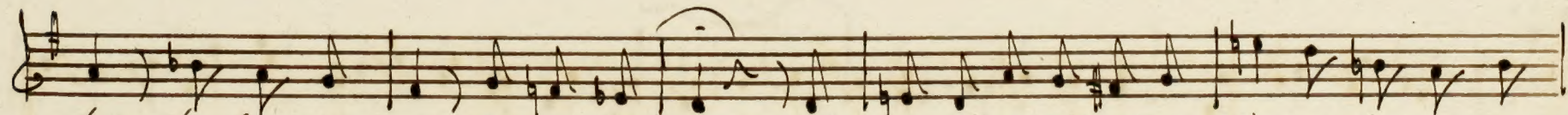
Je t'aime un peu dit la pre-mière ri-pi-tait Bas-tien trans-por-



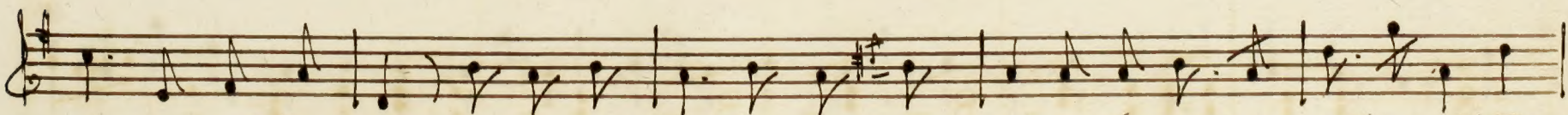
te!! cueillons la se-con-de ma che-re quoi' je te plais! en ri-ri-té quoi' je te



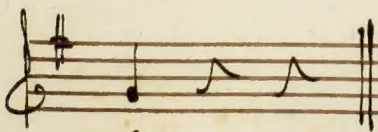
plais! en ri-ri-té Beaucoup c'est toi que je pré-fi-re la fleur te veut c'est tout de



bon, la fleur te veut c'est tout de bon et Lise ^{encor} alors était sin-cère, la mar-que

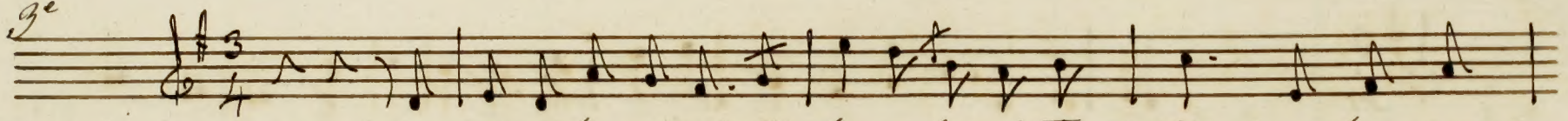


ri-té a-vait rai-son, et Lise en-cor i-tait sin-cère la mar-que-rite a-vait rai-

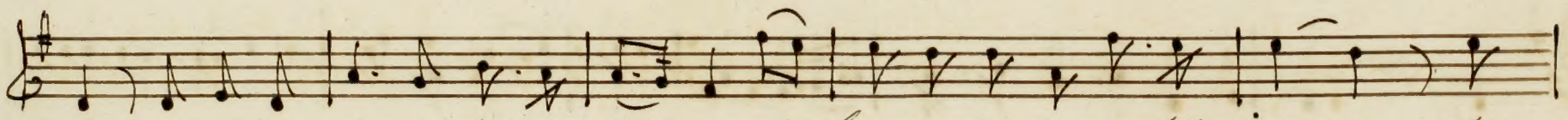


Son.

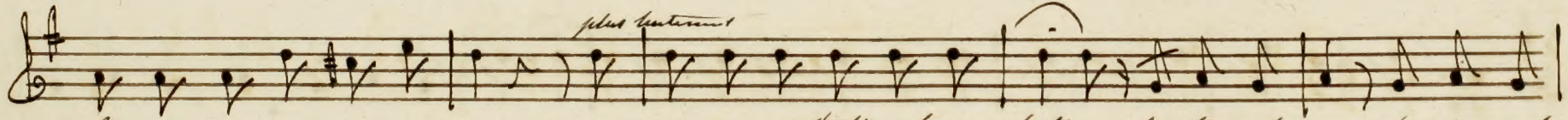
3^e



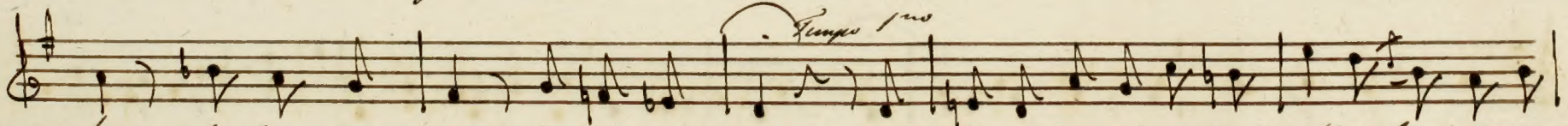
A cet te fleur simple et jo-li-e d'au in-ter-prise des a-



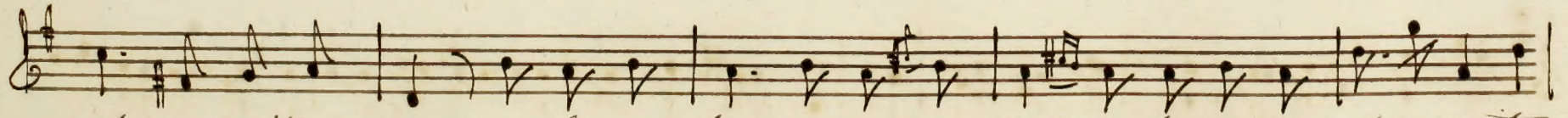
mours demande en-cor je t'en sup-pli-e si Li-se m'ai-me-ra tou-jours si



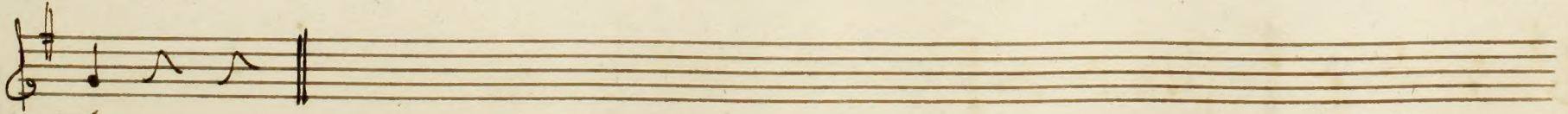
Li-se m'ai-me-ra tou-jours *plus tendrement* dit la belle la fleur le veut c'est tout de



bon la fleur le veut c'est tout de bon et Lise alors pensait comme elle la marque-

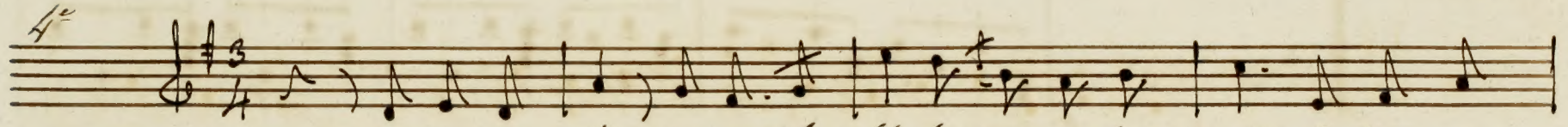


rite a-vait rai-son, et Lise a-lors pensait comme elle la marguerite a-vait rai-

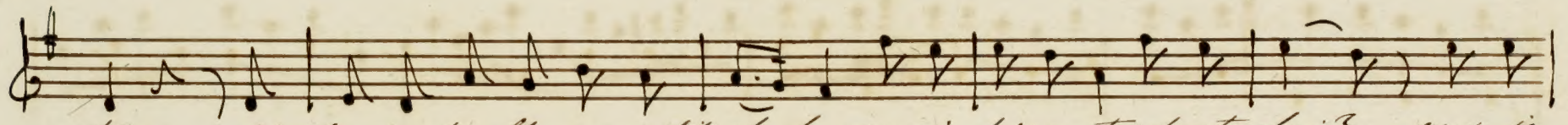


son.

4^e

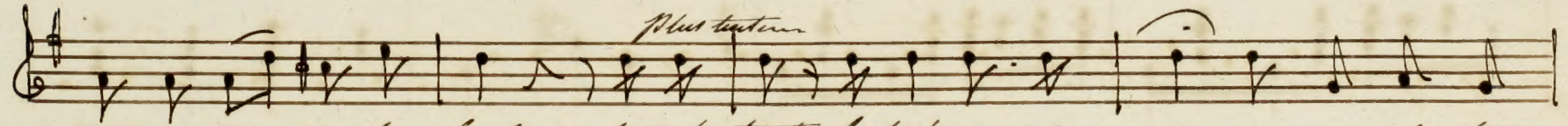


A diu Bas-tien Sais moi fi-de-le voi-ci la nuit e' loi-gue

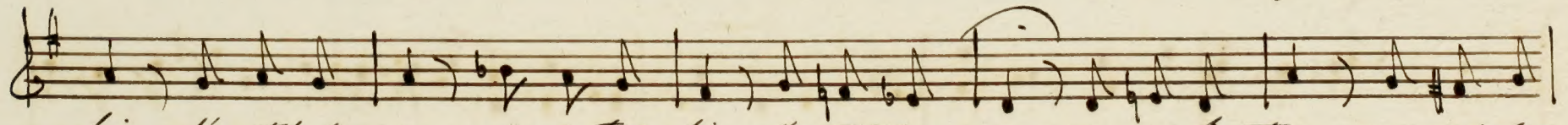


toi ah! Li-se la fleur nous dit el le que je dois compter sur ta fai^{te} que je

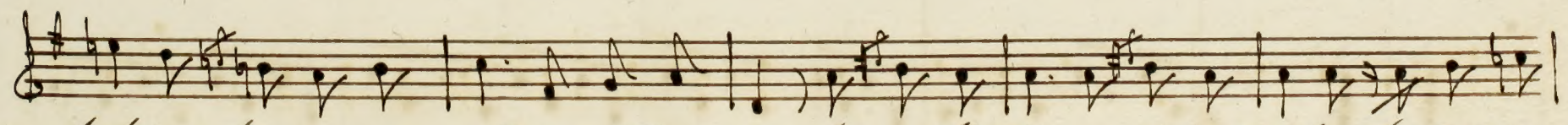
Plus tendre



dois compter sur ta fai^{te} pas du tout he las! mais de gra-ce garde toi



bien d'un tel soupçon garde toi bien d'un tel soupçon, pauvre Bastien un mois se



pas se la marque-rite a-sait rai-son pauvre Bastien un mois se pas se la mar-que-



rite a-sait rai-son-